

## MIND IS UNIVERSE CINDY SHUNG

September 24 – November 8, 2022

### COMING HOME (Gallery 1, Clockwise):



*Lend Me Your Ears*, 2022  
Archival pigment print and watercolor on  
Mulberry paper, 24 x 24 in. \$1800



*HAL told me*, 2022  
Archival pigment print and watercolor on  
Mulberry paper, 24 x 24 in. \$1800



*I am MONO*, 2022  
Archival pigment print and watercolor on  
Mulberry paper, 24 x 24 in. \$1800



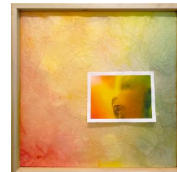
*I Wish My Mother Weren't My Cousin*, 2022  
Archival pigment print and watercolor on  
Mulberry paper, 24 x 24 in. \$1800



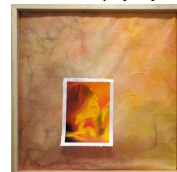
*Red Queen*, 2022  
Archival pigment print and watercolor on  
Mulberry paper, 24 x 24 in. \$1800



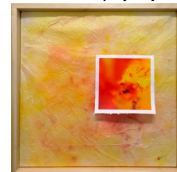
*Apollo's Chariot*, 2018  
Archival pigment print, lightbox  
24 x 36 in. \$2000



*Maybe I Shouldn't Have*, 2022  
Archival pigment print and watercolor on  
Mulberry paper, 24 x 24 in. \$1800



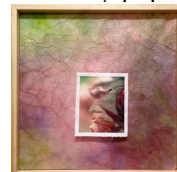
*In a Galaxy Far, Far away...*, 2022  
Archival pigment print and watercolor on  
Mulberry paper, 24 x 24 in. \$1800



*Blazing Thunder*, 2022  
Archival pigment print and watercolor on  
Mulberry paper, 24 x 24 in. \$1800



*This Eternally Desolate Place*, 2022  
Archival pigment print and watercolor on  
Mulberry paper, 24 x 24 in. \$1800



*Oh, Penelope!*, 2022  
Archival pigment print and watercolor on  
Mulberry paper, 24 x 24 in. \$1800

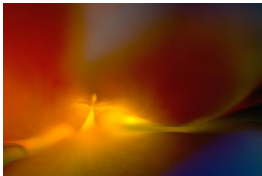
**MIND IS UNIVERSE**  
**CINDY SHUNG**

September 24 – November 8, 2022

**Gallery 2, Clockwise:**



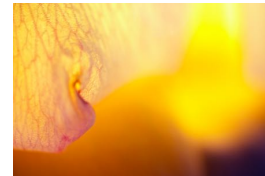
*Portrait of an Aria*, 2014  
 Archival pigment print on bamboo paper  
 16 x 20 inches (image: 5.5 x 7.6 in.)  
 Edition of 5 + 3 AP:  
 no. 1: \$500 (frame included)  
 no. 2: \$525 (unframed)  
 no. 3: \$550 (unframed)  
 no. 4: \$575 (unframed)  
 no. 5: \$600 (unframed)



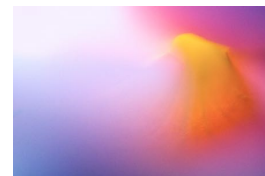
*The Light*, 2014  
 Archival pigment print on Legacy Fibre  
 18 x 24 inches (image: 12 x 18 in.)  
 Edition of 5 + 3 AP:  
 no. 1: \$600 (frame included)  
 no. 2: \$625 (unframed)  
 no. 3: \$650 (unframed)  
 no. 4: \$675 (unframed)  
 no. 5: \$700 (unframed)



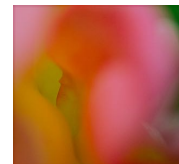
*I Am Here*, 2018  
 Archival pigment print on kozo paper  
 16 x 20 inches (image 5.3 x 8 in.)  
 Edition of 5 + 3 AP:  
 no. 1: \$500 (frame included)  
 no. 2: \$525 (unframed)  
 no. 3: \$550 (unframed)  
 no. 4: \$575 (unframed)  
 no. 5: \$600 (unframed)



*The Yellow*, 2019  
 Archival pigment print on metallic paper  
 16 x 20 inches (image 5.3 x 8 in.)  
 Edition of 5 + 3 AP:  
 no. 1: \$500 (frame included)  
 no. 2: \$525 (unframed)  
 no. 3: \$550 (unframed)  
 no. 4: \$575 (unframed)  
 no. 5: \$600 (unframed)



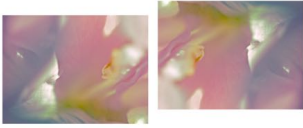
*May the Wings Be Mine*, 2015  
 Archival pigment print on metallic paper  
 18 x 24 inches (image: 12 x 18 in.)  
 Edition of 5 + 3 AP:  
 no. 1: \$600 (frame included)  
 no. 2: \$625 (unframed)  
 no. 3: \$650 (unframed)  
 no. 4: \$675 (unframed)  
 no. 5: \$700 (unframed)



*The Pink*, 2018  
 Archival pigment print on metallic paper  
 20 x 16 inches (image 6.5 x 6.9 in.)  
 Edition of 5 + 3 AP:  
 no. 1: \$500 (frame included)  
 no. 2: \$525 (unframed)  
 no. 3: \$550 (unframed)  
 no. 4: \$575 (unframed)  
 no. 5: \$600 (unframed)

## MIND IS UNIVERSE CINDY SHUNG

September 24 – November 8, 2022

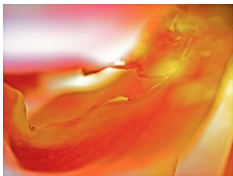


*Trading Places, 2018*

Archival pigment print on Legacy Fibre  
16 x 20 inches (image 5 x 12 in.)

Edition of 5 + 3 AP:

- no. 1: \$500 (frame included)
- no. 2: \$525 (unframed)
- no. 3: \$550 (unframed)
- no. 4: \$575 (unframed)
- no. 5: \$600 (unframed)

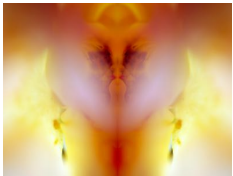


*Sunday Afternoon, 2015*

Archival pigment print on metallic paper  
16 x 20 inches (image 5.6 x 7.5 in.)

Edition of 5 + 3 AP:

- no. 1: \$500 (frame included)
- no. 2: \$525 (unframed)
- no. 3: \$550 (unframed)
- no. 4: \$575 (unframed)
- no. 5: \$600 (unframed)



*Imagination, Make-Believe, Truth, 2020*

Archival pigment print on Legacy Fibre  
18 x 24 inches (image: 13 x 17)

Edition of 5 + 3 AP:

- no. 1: \$600 (frame included)
- no. 2: \$625 (unframed)
- no. 3: \$650 (unframed)
- no. 4: \$675 (unframed)
- no. 5: \$700 (unframed)

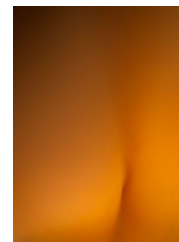


*Journey to the West, 2016*

Archival pigment print on kozo paper  
16 x 20 inches (image 4.5 x 9 in.)

Edition of 5 + 3 AP:

- no. 1: \$500 (frame included)
- no. 2: \$525 (unframed)
- no. 3: \$550 (unframed)
- no. 4: \$575 (unframed)
- no. 5: \$600 (unframed)



*Lovely, 2015*

Archival pigment print on bamboo paper  
20 x 16 inches (image 8.5 x 6 in.)

Edition of 5 + 3 AP:

- no. 1: \$500 (frame included)
- no. 2: \$525 (unframed)
- no. 3: \$550 (unframed)
- no. 4: \$575 (unframed)
- no. 5: \$600 (unframed)