

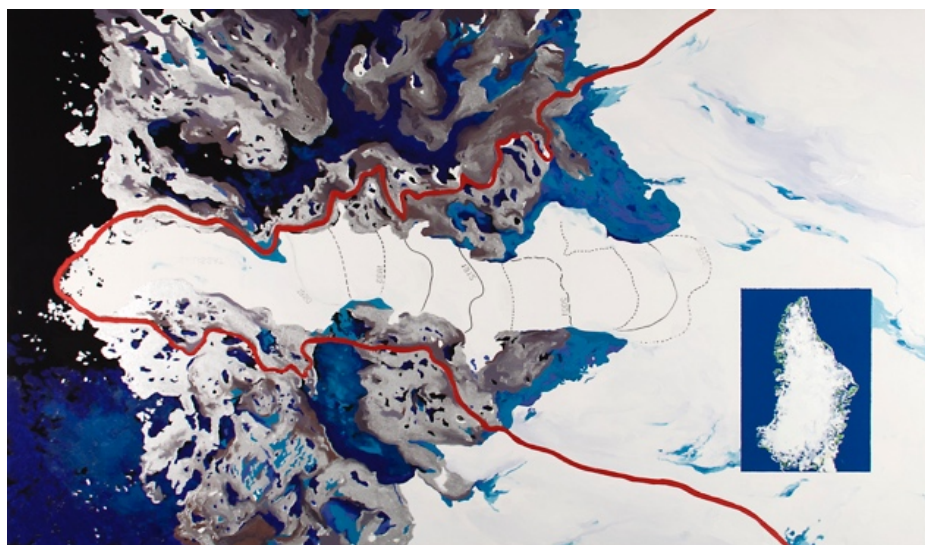
CINDY LISICA
GALLERY

4411 Montrose Blvd. Suite F, Houston TX 77006 | 713.807.7760 | gallery@cindylisica.com

DIANE BURKO | Traces of Change



Illulissat Glacier II and Viedma Traverse II, 2015, archival inkjet prints mounted on Dibond, 40 x 60 in. (each)



UNESCO National Heritage II, 2015, oil and Flashe paint on canvas, 42 x 72 in.

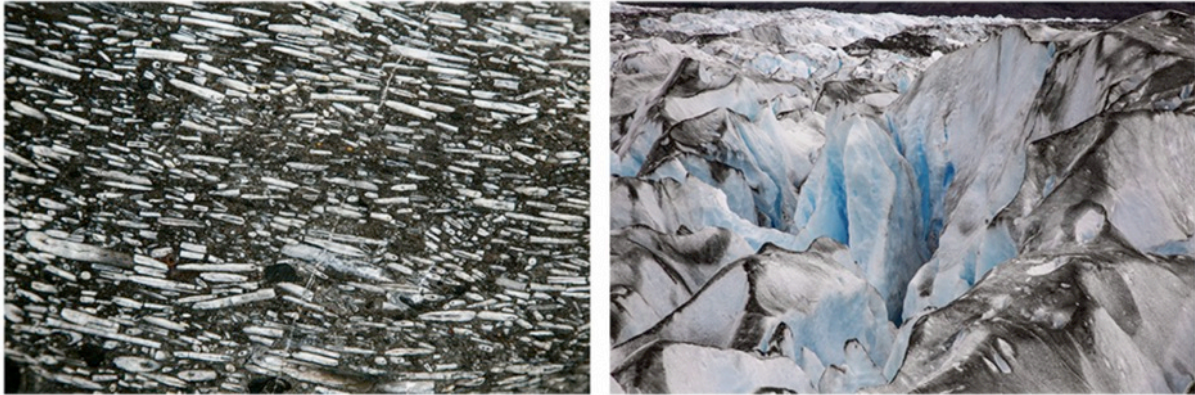
CINDY LISICA

GALLERY

4411 Montrose Blvd. Houston, TX 77006 | 713-807-7760 | www.cindylisica.com

FOR IMMEDIATE RELEASE:

DIANE BURKO | *Traces of Change*
March 18 – April 16, 2016



Diane Burko, *Seabed Fossils*, *Upsala and Viedma Traverse, I*, photographs, 40 x 60 inches (each)

"Traces of Change" is a solo exhibition by Diane Burko, featuring recent large-scale photography and photo-based media. For over 40 years, Burko has investigated monumental and geological phenomena both on the ground and from the air. She observes the world from open-door helicopters and Cessna aircraft with cameras and sketchpads. Burko's artistic practice is situated at the intersection of art and science and focused on issues of climate change. In the past year, she has participated in expeditions to Antarctica and the Arctic Circle, producing thousands of photographs from the air, sea and ground.

For the *Deep Time* project, images are based on the artist's January 2015 expedition to the Patagonian Ice field of Argentina. Burko contrasts the concept of the deep past with the immediate present in perhaps her most metaphoric and abstract endeavor to date. Burko has discovered compelling and seductive beauty resulting in a masterful body of work from years of study and collaboration with glacial geologists. This exhibition also presents the "Elegy Series" with printed works that allude to fictional aerial views based on enlargements of details from Burko's paintings. The powerful images are informed by the geological knowledge that she has garnered through study during her many polar expeditions. The works serve as elegies identifying locations threatened by climate change throughout the world.

About the artist: Diane Burko (b. 1945, Brooklyn, NY) is an American painter and photographer currently based in Philadelphia. She graduated from Skidmore College in 1966 and completed her MFA from University of Pennsylvania in 1969. Burko's work has been widely exhibited internationally and appears in prominent private and institutional collections. She has received a number of impressive awards for her fine art, including the WCA/CAA Lifetime Achievement Award in 2011.

Diane Burko

b. 1945 (Brooklyn), lives and works in Philadelphia

EDUCATION

1969 MFA, Fine Arts, University of Pennsylvania

1966 BA, Painting and Art History, Skidmore College

SOLO EXHIBITIONS

Diane Burko: Traces of Change, Cindy Lisica Gallery, Houston, TX, 2016

Glacial Dimensions: Art and the Global Ice Melt, Burger Gallery, Kean University, Union, NJ, 2016

Investigations of the Environment, LewAllen Galleries, Santa Fe, NM, 2014

Diane Burko: Glacial Perspectives, Zimmerli Art Museum, Rutgers University, New Brunswick, NJ, 2013-2014

Water Matters, LewAllen Galleries, Santa Fe, NM, 2012

Politics of Snow II, Princeton University Woodrow Wilson School, Bernstein Gallery, Princeton, NJ, 2011

Politics of Snow, Locks Galleries, Philadelphia, PA, 2010

Flow, Tufts University Art Gallery, Aidekman Arts Center, Medford, MA, 2006

Flow, James A. Michener Art Museum, Doylestown, PA, 2006

Landscapes: Paint/Pixel, Rider University Art Gallery, Lawrenceville, NJ, 2005

Earth, Water, Fire, Ice, Locks Gallery, Philadelphia, PA, 2004

The Volcano Series, Locks Gallery, Philadelphia, PA, 2001

A Sense of Place: Paintings by Diane Burko, The Parthenon Museum, Nashville, TN, 1999

Land Survey: 1979-1995 - Paintings by Diane Burko. (traveled to venues in PA, NY, VA), 1995-1996

Luci ed Ombra di Bellagio - The Light and Shadow of Bellagio, Locks Gallery, Philadelphia, PA, 1994

Estampes: Works on Paper, Locks Gallery, Philadelphia, PA, 1992

Diane Burko at Giverny, National Academy of Sciences, Washington, DC, 1991

Reflets - Paintings from Giverny, Marian Locks Gallery, Philadelphia, PA, 1990

Diane Burko, 1985-1987, Marian Locks Gallery, Philadelphia, PA, 1988

Fifteen Years: 1972-1987, Hollins College, Roanoke, VA, 1987

Waterways of Pennsylvania, (traveled to multiple venues in PA), 1983

Mary H. Dana Women Artists Series, Mable Smith Douglass Library, Douglass College. 1982

Rutgers University, New Brunswick, NJ, 1982

Stefanotti Gallery, New York, NY, 1982

Morris Gallery, The Pennsylvania Academy of the Fine Arts, Philadelphia, PA, 1980

Stefanotti Gallery, New York, NY, Bucknell University, Lewisburg, PA, 1980

First Distinguished Alumni Award Exhibition, Skidmore College, Saratoga Springs, NY, Genesis Galleries Ltd., NY, NY, 1979

Arizona State University, Tempe, AZ, 1977

Marian Locks Gallery, Philadelphia, PA, 1976

O.K. Harris Gallery, New York, NY, 1976

Philadelphia Art Alliance, Philadelphia, PA. 1973

Chatham College, Pittsburgh, PA, 1972

College of Textiles and Science, Philadelphia, PA, 1971

GROUP EXHIBITIONS

Frozen Earth: Images from the Arctic Circle, Noyes Museum of Art, Stockton College, Oceanville, NJ, 2016

Tipping Points: Artists Address the Climate Crises, Gallery Bergen, Bergen Community College, Paramus, NJ, 2016

Seven Deadly Sins: Wrath - Force of Nature, Wave Hill Public Garden and Cultural Center, (as part of The Seven Deadly Sins in collaboration with Aldrich Museum, Bruce Museum, Hudson River Museum, Hudson Valley Center for Contemporary Art, Katonah Museum and Neuberger Museum, Bronx, NY, 2015

Climate Contemporary: Artists Respond to Climate Change, Lake George Arts Project, Lake George, NY, 2015

Imagining Deep Time, National Academy of Sciences Building, West Gallery, Washington, DC, 2015

Bucks County Artists: A Cross Section, Hicks Art Center Gallery, Bucks County Community College, PA, 2014

Due North, Philagrafika Projects, Philadelphia, PA, 2014

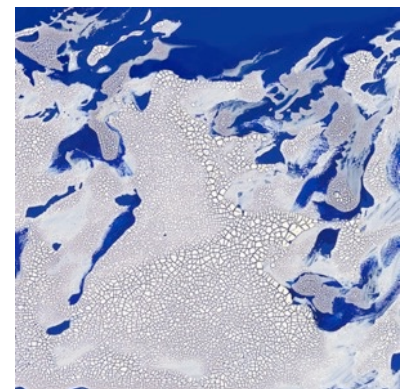
Seeing Glacial Time, Tufts University Art Gallery, Medford, MA, 2014

Sensing Change, Chemical Heritage Foundation, Philadelphia, PA, 2014

The Female Gaze: Women Artists Making Their World, Pennsylvania Academy of Fine Art, Philadelphia, PA, 2013



Creative Hand, Discerning Heart: Story, Symbol, Self, James A Michener Art Museum, Doylestown, PA, 2013
Value of Water, Cathedral of St. John the Divine, New York, NY, 2012
Double Exposure and Politics of Snow, Erie Art Museum, Erie, PA, 2012
Response, Remembrance, Reflection: Artists of Philadelphia and the 10 Year Anniversary of September 11, Woodmere Art Museum, Philadelphia, PA, 2011
Pennsylvania Impressionism and Landscape: Woodmere Art Museum, Philadelphia, PA, 2011
Pennsylvania Landscapes: Lancaster Museum of Art, Lancaster, PA, 2011
Unstable Ground: Tang Art Museum, Skidmore College, Saratoga Springs, NY, 2011
Same: Difference: Pennsylvania Academy of the Fine Arts Museum, Annenberg Gallery, Philadelphia, PA, 2011
Trouble in Paradise: Examining discord between nature and society, Tucson Museum of Art, Tucson, AZ, 2009
Seduced: the Relevance of Landscape in the 21st Century, Guilford Art Center, Guilford, CT, 2009
Out of the Blue, Bergen Community College Art Gallery, Paramus, NJ, 2009
Alumni Invitational II: Diane Burko, Linda Karshon, Joshua Marks, Bing Wright, Tang Museum, Skidmore College Saratoga Springs, NY, 2007
The Grand Canyon: From Dream to Icon, Tucson Museum of Art, Tucson, AZ, 2006
Works on Paper from the Permanent Collection, Pennsylvania Academy of the Fine Arts, Philadelphia, PA, 2006
Out of the Blue, Abington Art Center, Jenkintown, PA, 2006
Torrid, Sharadin Art Gallery, Kutztown University, Kutztown, PA, 2005
Terrestrial Forces, Florida State University Museum of Fine Arts, Tallahassee, FL, 2004
Editions, Locks Gallery, Philadelphia, PA, 2003
Extreme Landscape, Hunterdon Museum of Art, Clinton, NJ, 2003
Variable Geographies, Locks Gallery, Philadelphia, PA, 2003
The American River, Brattleboro Museum & Art Center, Brattleboro, VT. Traveling exhibition: T.W. Wood Gallery and Art Center, Montpelier, VT; Florence Griswold Museum, Lyme, CT, 2003
Landscape-Mindscapes, Long Beach Island Foundation of the Arts and Sciences, Loveladies, NJ, 2002
Artists of the Commonwealth: Realism in Pennsylvania Painting, 1950-2000, James A. Michener Art Museum, Doylestown, PA (traveled to multiple venues in PA), 2002
Pictura Lucida: Paintings by the Established Artist Recipients of the Leeway Foundation Grants 2000, Philadelphia Art Alliance, Philadelphia, PA, 2000
Public Art: Concept, Process, Realization, Nexus Foundation for Today's Art, Philadelphia, PA, 1999
Through the Heart of the City: An Exhibition with the Schuylkill River as the Source of Inspiration, Philadelphia Art Alliance, PA, 1998
Aspects of Representation, Western Carolina University, NC, 1998
An Extended View: Landscapes by Philadelphia Artists, Levy Gallery, Moore College of Art and Design, Philadelphia, PA, 1997
Winter Group Show, Locks Gallery, Philadelphia, PA, 1997
Invitational Drawing Exhibition, Smith College, Northampton, MA, 1996
Women Artist Series 25th Anniversary Retrospective, Mary H. Dana Women Artist Series, Mabel Smith Douglass Library, Douglass College, Rutgers University, New Brunswick, NJ, 1996
Artist Made Objects, Locks Gallery, Philadelphia, PA, 1995
Chicago International Art Exposition, Chicago, IL, 1995
Landscape: Work by Women Artists, Bryn Mawr College, Bryn Mawr, PA, 1994
American Artists Abroad: Global Impressions, Lintas Worldwide, New York, NY, 1993
Works on Paper, Beaver College Art Gallery, Glenside, PA, 1993
Thick and Thin, Islip Art Museum, East Islip, NY, 1993
Locks Gallery Group, International Contemporary Art Fair, Yokohama, Japan, 1991
New Viewpoints: Contemporary American Women Realists, Seville World Expo American Pavillion, Seville, Spain, 1992
Twentieth Anniversary of the Women Artist Series, Mary H. Dana Women Artists Series, Mabel Smith Douglass Library, Douglass College, Rutgers University, New Brunswick, NJ, 1992
Juvenilia: Art of the Future Past, Levy Gallery, Moore College of Art and Design, Philadelphia, PA, 1991
Fragile Objects: Landscape Into Art, New Visions Gallery, Ithaca, NY, 1991
Art Now - Artists Choose Artists, Institute of Contemporary Art, University of Pennsylvania, Philadelphia, PA, 1991
Penn Prints - Thirty Years, Arthur Ross Gallery, University of Pennsylvania, Philadelphia, PA, 1990
Printed in America, Walters Hall Gallery, Douglass College, New Brunswick, NJ, 1990
Invitational Exhibition, The Watson Gallery, Houston, TX, 1989
Works on Paper, Beaver College Art Gallery, Glenside, PA, 1989



Elegy for San Rafael Glacier, 2015
 Archival inkjet print, 30 x 30"



Hard Choices/Just Rewards, Levy Gallery, Moore College of Art and Design, Philadelphia, Pa.
 Traveled to: Southern Alleghenies Museum of Art, Loretto, PA; Blair Art Museum, Hollidaysburg, Pa; Johnstown Art Museum, Johnstown, PA
Confluence-Juin, Espace Culturel de Saint-Germain-des-Angles, Evreux, France, 1989
The Face of the Land, Southern Alleghenies Museum of Art, Loretto, PA, 1988
American History: Women and the US Constitution, Atlanta College of Art, Atlanta, GA, 1988
The Luther W. Brady Collection of Deferred Gifts to the Picker Art Gallery: 20th Century Works on Paper, The Picker Art Gallery, Colgate University, Hamilton, NY, 1987

Perspectives - PA, Carnegie Mellon University, Pittsburgh, PA, 1987
A Sense of Place, Joan Hodgel Gallery, Sarasota, FL, 1987
Summer Group Show, Shippee Gallery, New York, NY, 1987
The Water Color Show, Elaine Benson Gallery, East Hampton, NY, 1986
Artists and the Print, Maryland Art Institute, Baltimore, MD, 1986
Whoa! Contemporary Art of the Southwest, Tampa Museum of Art, Tampa, FL, 1986
A Decade of Visual Arts at Princeton: Faculty 1975-1985, The Art Museum, Princeton University, Princeton, NJ, 1985
The Main Group, Marian Locks Gallery, Philadelphia, PA, 1985
Gallery Group, Armstrong Gallery, New York, NY, 1985
Philadelphia Drawing Competition - 1984 -1985, The Philadelphia Art Alliance, Philadelphia, PA, 1985
Grand Canyon Revisited, Denver Museum of Natural History, Denver, CO, 1985
Women Artist Series - It's History, Mary H. Dana Women Artists Series, Mabel Smith Douglass Library, Douglass College, Rutgers University, New Brunswick, NJ, 1984
Drawings by Contemporary American Figurative Artists, Mezerhoff Gallery, Maryland College of Art, Baltimore, MD, 1984
Gallery Group - Summer Show, Armstrong, Gallery, New York, NY, 1984
Works on Paper, Armstrong, Gallery, New York, NY, 1983
Works on Paper: Contemporary Landscape Painting, (traveled to venues in PA, CT, MA), 1983
Painters of the Pennsylvania Landscape, Southern Alleghenies Museum of Art, Loretto, PA, 1983
Printed by Women: A National Exhibition of Photographs and Prints, Port of History Museum, Philadelphia, PA, 1983
Perspective on Contemporary American Realism - Works on Paper from the Collection of Jalane and Richard Davidson, Art Institute of Chicago, Chicago, IL, 1983
Summer Invitational, Everhart Museum, Scranton, PA, 1982
Realism in the Grand Style, Stefanotti Gallery, New York, NY, 1982
New York Selections, Mitzi Landau Gallery, Los Angeles, CA, 1982
Perspective on Contemporary American Realism - Works on Paper from the Collection of Jalane and Richard Davidson, Pennsylvania Academy of the Fine Arts, Philadelphia, PA, 1982
65th Annual Print Club Show, Print Club of Philadelphia, PA, 1981
The American Landscape: Recent Developments, Whitney Museum of American Art, Fairfield County Branch, Stamford, CT, 1981
Contemporary Landscape Painting, Taft Museum, Cincinnati, OH, 1981
A Colored Pencil Invitational, Carson/Shapiro Gallery, Denver, CO, 1981
Invitational, Southern Alleghenies Museum of Art, Loretto, PA, 1981
Landscape Interpretations, Heydt/Bair Gallery, Santa Fe, NM, 1981
National Invitational Women's Show, Suzanne Brown Gallery, Scottsdale, AZ, 1981
A Look at Drawing, Goldie Parley Design Center, Philadelphia College of Science and Textiles, Philadelphia, PA, 1981
A Tribute to the Print Club: 65th Anniversary Exhibition, Philadelphia Art Alliance, Philadelphia, PA, 1980
Visitors to Arizona: 1846 to Present, Traveled to: Phoenix Museum of Art, Phoenix, AZ; Tucson Museum of Art, Tucson, AZ, 1980
Trends of the 1970s, Moravian College Art Gallery, Bethlehem, PA, 1980
Rutgers National Drawing Exhibition, Stedman Art Gallery, Rutgers University, Camden, NJ, 1979
Cross References: The Photograph as a Point of Departure, Philadelphia College of Art, Philadelphia, PA, 1979
Painting and the Photograph, Philadelphia College of Art, Philadelphia, PA, 1979
This is Today, Root Art Center, Hamilton College, Clinton, NY, 1978

Contemporary Drawings, The Pennsylvania Academy of the Fine Arts, Philadelphia, PA, 1978
Work on Paper Invitational, St. Louis Community College, St. Louis, MO, 1978
Twenty Landscape Painters, Summit Art Center, Summit, NJ, 1977
Contemporary Reflections, Aldrich Museum of Contemporary Art, Ridgefield, CT, 1977
Contemporary Landscape - Image and Idea, Queensborough Community College, Bayside, NY, 1977
Contemporary Works on Paper by Women, Woman's Building, Los Angeles, CA, 1977
Boston Printmakers Annual, DeCordova Museum, Lincoln, MA, 1977
Drawings and Prints '77, Miami University, Oxford, OH, 1977
Art Today: USA, Iranian American Society Galleries, Tehran, Iran, 1977
Contemporary Art of Philadelphia, Squibb Gallery, Princeton, NJ, 1977
This is Today, Root Art Center, Hamilton College, Clinton, NY, 1977
Invitational Drawing Show, Beaver College, Glenside, PA, 1976
Prints by Pennsylvania Artists, Museum of Art, Pennsylvania State University, State College, PA, 1976
Philadelphians in Washington, Pyramid Gallery, Washington, DC, 1976
Year of the Woman, Bronx Museum of the Arts, Bronx, NY, 1975
Six Views on the Landscape, Graphics I and II Gallery, Boston, MA, 1975
Ten Artists Look at the Landscape, Glassboro State College, Glassboro, NJ, 1975
The Philadelphia Scene, Museum of Art, Pennsylvania State University, State College, PA, 1975
Woman's Work - 1974, Museum of the Philadelphia Civic Center, Philadelphia, PA, 1974
Eight Women Realists, University of Massachusetts, Amherst, MA, 1973
Earth Art 1973, Museum of the Philadelphia Civic Center, Philadelphia, PA, 1973
National Painting Show, Washington and Jefferson College, Washington, PA, 1973
New Faces, Marian Locks Gallery, Philadelphia, PA, 1972
Painting and Photography: Something in Common, Philadelphia Museum of Art and Fleischer Art Memorial, 1972
1971 Arts Exhibit, William Penn Memorial Museum, Harrisburg, PA, 1972
Burko - Hansen, Beaver College, Glenside, PA, 1972
Concepts/Drawings, Marian Locks Gallery, Philadelphia, PA, 1972
Two Women: Paintings by Burko and Yanan, University Arts League, Philadelphia, PA, 1969



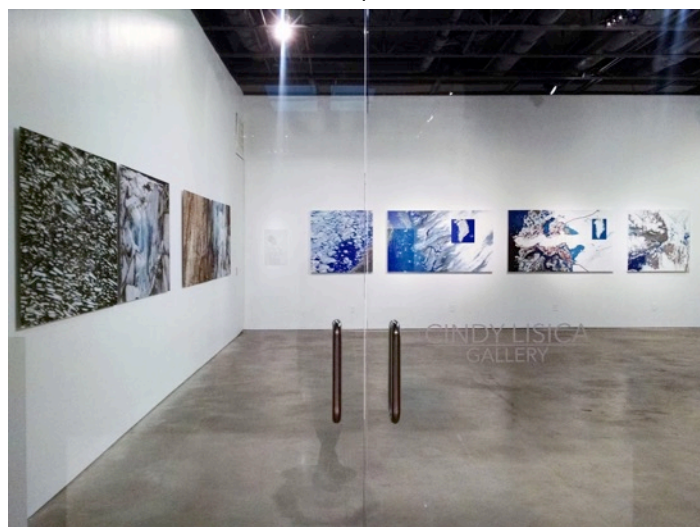
AWARDS & RECOGNITION

Independence Foundation Fellowship in the Arts, 2013
INSTAAR Affiliate, University of Colorado Boulder, 2013
WCA Lifetime Achievement Award, Women's Caucus for Art, 2011
Bessie Berman Grant in Painting, The Leeway Foundation, 2000
"One Percent" Public Art Commission award, Redevelopment Authority of Philadelphia, Marriott Hotel, Philadelphia, 1996
Residence Fellowship at the Bellagio Study and Conference Center, The Rockefeller Foundation, September, 1993

National Endowment for the Arts Visual Arts Fellowship, 1991-1992, 1985-1986
Distinguished Achievement Award, Skidmore College, 1991
Nominee for the AVA (Awards in the Visual Arts) National Artist Award, 1990, 1989, 1984, 1981
Residence Fellowship at Giverny, Readers Digest Foundation, April – September, 1989
Institute of Contemporary Art – "Patron Print" Artist, 1989
Pennsylvania Council on the Arts Individual Artists Grant, 1989, 1981
Visiting Artist Grant – Artists for the Environment Foundation, Walpak, NJ, 1983
Visiting Fellowship to Tamarind Institute, Albuquerque, NM, 1982, 1980
Visiting Fellowship to the Print Research Facility at Arizona State University, Tempe, AZ, 1981
The Print Club of Philadelphia, 57th International Competition – Professional Prize, 1981
Purchase Prize, Rutgers University National Drawing Show, New Brunswick, NJ, 1979

SELECTED COLLECTIONS

Air Co. Corporation, Montvale, NJ
American Telephone and Telegraph Center
ARCO, Philadelphia
Art Institute of Chicago, Chicago, IL
AVC Corporation, Philadelphia
BankAmerica, CA
Blue Cross of Southern California
CIGNA Corporation, Philadelphia
Colgate University, Picker Art Gallery, Hamilton, NY
Commodities Corporation of America, NY
Continental Bank, Philadelphia De Cordova Museum, Lincoln, MA
Denver Art Museum, CO
First Pennsylvania Bank, Philadelphia
FMC Corporation, Philadelphia
General Public Utilities Corporation of Reading, Reading, PA
Goldman and Sachs, New York
Hahnemann Hospital, Philadelphia
Hay Associates, Philadelphia
Hood Museum of Art, Hanover, NH
IBM, Tucson, AZ
James A. Michener Art Museum, Doylestown, PA
Ken Parker and Associates, Philadelphia
Mobil Oil Corporation, Washington, D.C.
The National Academy of Sciences, Washington, D.C.
Pennsylvania Academy of the Fine Arts, Philadelphia
Petro-Lewis Corporation, Denver, CO
The Pew Charitable Trusts
The Philadelphia Convention Center
The Philadelphia Museum of Art
The Prudential Insurance Company of America, Newark, NJ
Reader's Digest, Pleasantville, NY
Reading Public Museum, Reading, PA
Rutgers University Collection, Stedman Art Gallery, Camden, NJ
Security Pacific National Bank, CA
Smith, Kline and French, Philadelphia
University of New Mexico, Tamarind Collection, Albuquerque, NM
Wells Fargo Bank, CA
Woodmere Art Museum, Philadelphia



PUBLICATION & REVIEWS

Langone, Christina, "Could Glaciology Use a Dose of Feminism?"
Glacier Hub, March 2016
"Diane Burko: Fotofest Biennial." Artshound.com, 2016
Minutella, Erica, "Press Bid to Play: Benefit 2016 Artist Diane Burko," In Liquid, February 2016
Yoder, Kate, "Incredible glacier art pays homage to our disappearing ice," *Grist*, February, 2016
Walters, Allison "How do contemporary painters of shifting landscapes respond to environmental issues, specifically climate change?," Bucks New University, M.A. Art and Design Practice Thesis
Zhang, Weiye, "Melting Glaciers Inspire Artists," Glacier Hub, August 2015
Jackson, M., "Glaciers and Climate Change: Narratives of Ruined Futures," WIREs Climate Change, July 2015

"What Deadly Sins Look Like," Wall Street Journal, July 2015

Verchot, Manon "Artist Diane Burko Ties Together Art and Science," Glacier Hub, July 2015

"Frozen Earth: Images from the Arctic Circle," New Jersey Stage, April 2015

Hall, Anthony F. "Where Are You in This? Contemporary Artists Respond to Climate Change," The Lake George Mirror, Lake George, NY, June 2015

"Frozen Earth: Images from the Arctic Circle," New Jersey Stage, April 2015

Dauray, Mary Lou "Artist Diane Burko Raises Awareness About Climate Destruction," Healing Power of Art & Artists, April 2015

"Icy Inspiration," World Policy Blog 2015

French, Kristen "Disappearing Glaciers, an Artist-Activist's Muse," Glacier Hub, December 2014

Shrift, Gwenn "Peaks of Artistry, and Other Subjects at BCCC," Bucks County Courier Times, September 2014

Dingman, Erica "Diane Burko: Visualizing Arctic Transitions", World Policy Blog, September 2014

Steuer, Gary "Art, Science and Nature", Mile-High Musings on Arts, Culture, Creativity and Philanthropy, April 2014

Moeller, Robert "The Melting Ice...", Art New England Online, April 2014

Perez-Luna, Elisabeth "Documenting Climate Change Through Art," Newsworks - The Pulse, March 2014

Feeney, Mark "At Tufts, Going Far North to Look at Climate Change," Boston Globe, February 2014

Spaid, Sue, "Diane Burko: Moving Viewers to Pay Attention", Caldaria: Exploring the Nexus of Art Science and the Sublime, December 2013/January 2014

O'Reilly, Michael "Data and Aesthetics: Sensing Change," WHYY Friday Arts, November 2013

McDougall, Dawn, "Framing Change", Chemical Heritage - Volume 31, Number 3, Fall 2013/Winter 2014

Nickels, Thom, "City Beat: Glacial Change", Philadelphia | Bucks | Lehigh: Icon, December 2013

"The View From On High", Rutgers Magazine - Volume 93, Number 3, Fall, 2013.

Gaub, Vaishali, "Zimmerli collaborates with Art History department on exhibits", Daily Targum, September 9, 2013.

Arntzenius, Linda, "Diane Burko's Polar Images Document Climate Change", Town Topics, September 5, 2013.

Burko, Diane, "My Personal Definition of Art", The Brooklyn Rail, September 4, 2013.

Newhall, Edith, "Science in Disguise", Philadelphia Inquirer, July 28, 2013.

Lewis-Hall, Jennifer, "The Female Gaze", PHL 17, March 28, 2013.

Lipton, Lauren, "Positively Philadelphia: Show Set for Groundbreaking Women's Art Collection", CBS Philly, November 11, 2012.

Soslow, Robin, "The Impulsive Traveler: Eerie Ice Duns in Erie, PA, and Presque Isle Park ", The Washington Post, January 13, 2012.

Merkle, Karen Rene, "Erie Art Museum Exhibits Evidence of Global Warming", The Erie Times-News, January 12, 2012.

Newhall, Edith, "Painter Shows Work in a New Medium: Photography", Philadelphia Inquirer, July 24, 2011.

Ledger, Martha, "Burko with a Camera, Not a Brush", Broad Street Review, July 16, 2011.

Lakshmin, Deepa, "On Thin Ice", 34th Street, July 14, 2011.

Kirsh, Andrea, "Diane Burko in Princeton", The artblog, May 3, 2011.

Wang, Regina, "Panel Speaks on Climate Change", The Daily Princetonian, April 22, 2011.

Cantor, Matt, "Philly Artists: Diane Burko's Lifetime Achievement", Philadelphia Citypaper, February 11, 2011.

Giannone, Katie, "Diane Burko: Art as a Language for Talking About Climate Change", Peaks Over Poverty, December 1, 2010.

Spaid, Sue, "Diane Burko", ARTUS, Dec 1, 2010.

Warner, Emily, "Diane Burko: Politics of Snow at Locks Gallery", artcritical.com, March 23, 2010.

"Painting Climate Change: An Interview with Artist Diane Burko About Her Show 'The Politics of Snow'", The Scientist, March 3, 2010.

Newhall, Edith, "Galleries: Paintings depicting the effects of global warming ", Philadelphia Inquirer , February 28, 2010.

Biberman, Jane, "Painting a Message of Melting", The Pennsylvania Gazette, February 23, 2010.

Rosof, Libby, "Burko and Apfelbaum-Power Women at Locks", The Artblog, February 18, 2010.

Stein, Judith E, "A Change of Temperature, on Canvas", Broad Street Review, February 16, 2010.

Kart, Jeff, "Diane Burko Puts Climate Change on a Canvas with 'Politics of Snow'", Treehugger, February 13, 2010.

Biberman, Jane, "Locks Gallery on the Square: Current Show, Diane Burko" Society Hill Reporter, January/February 2010.

Sozanski, Ed, "Painters and watery inspiration", The Philadelphia Inquirer: Arts and Entertainment, July 6, 2008.

"Abstract Artist Takes Flight", Lifestyle Magazine , Oct 2006, illust.

Kaufman, Leslie; "Women's Art Is Never Done", Inside, Fall 2006, illust.

Regan, Margaret ; "The Boss Ditch", Tucson Weekly , Aug 31 - Sept 6, 2006.

Sozanski, Ed; "Art: A delicate medium for a raw subject", The Philadelphia Inquirer: Arts and Entertainment, August 6, 2006.

"Exhibitions of Note: Diane Burko: Flow", Primetime, July 2006, Illust.

Donohoe, Victoria , "Landscapes of epic proportion," The Philadelphia Inquirer, June 18, 2006, Illust.

Newhall, Edith, "Painter a natural photographer," The Philadelphia Inquirer, June 16, 2006, Illust.

"Work by Diane Burko on View at Michener," Town Topics, June 7, 2006, Illust.

Harrington, Michael, "7 Days: Tuesday," The Philadelphia Inquirer, June 4, 2006, Illust.

Smith, Missy, "Abington Art Center hosts eco-friendly program April 23", Ticket, April 19/20, 2006.

Dormont, Linda, Art Matters, Artistic Climate: Weather and creativity interact at Abington Art Center, April 2006.

PRWeb, Out of the Blue: An Exhibition About Weather + the Creative Process February 28, 2006.

Artnet News, "Out of the Blue" in Abington January 31, 2006.

McQuaid, Cate, "Touching the Void," The Boston Globe, March 19, 2006, illust.

Fallon, Roberta, "Planet Rock ", Philadelphia Weekly , March 22-28, 2006, illust.

Newhall, Edith, "Looking Skyward for a Peak," March 17, 2006.

Keany, William, "Rain or Shine - Artists find Inspiration," *Northeast Times*, March 2, 2006.

Hogan, Pat, "Climate Control," *The Philadelphia Inquirer*, March 5, 2006.

"Work of Landscape Painter To Show at Rider Gallery," *Town Topics*, January 19, 2005, illust.

Purcell, Janet, "Exhibit by Burko offers 'history of exploration,'" *Trenton Times*, February 6, 2005, illust.

Van Dongen, Susan, "Earthly Eruptions," *TimeOff*, January 14-23, 2005, Illust.

Tumola, Cristabelle, "Icelandic Impressions," *Philadelphia Style*, September/October 2004, illust.

Sozanski, Edward J., "Depicting Wet Landscapes Born of Fire," *The Philadelphia Inquirer*, September 10, 2004, illust.

Harrington, Michael, "Elements in Art," *The Philadelphia Inquirer*, August 29, 2004, illust.

Mullen, Rachel, "Check out 'Extreme Landscape' in Hunterdon," *Bernardsville News*, September 18, 2003.

Genocchio, Benjamin, "Landscapes That Push The Boundaries," *The New York Times*, September 14, 2003.

Rice, Robin, "Rio Grand," *Philadelphia City Paper*, August 28 - September 4, 2003.

Bischoff, Dan, "Familiar Landscapes Through an Extreme Eye," *The Sunday Star-Ledger*, August 10, 2003.

"A River Runs Through It," *American Artist*, July 2003, Illust.

Vita, Tricia, "Molten Energy," *Islands Magazine*, April/May 2003, Illust.

Ratcliff, Carter, "Diane Burko: The Volcano Series," *Woman's Art Journal*, Fall 2002 / Winter 2003.

Fine, Elsa Honig. "Review: Diane Burko: The Volcano Series." *Woman's Art Journal*, Fall 2002/Winter 2003.

Hampton, Brad, "Diane Burko at Locks," *Art in America*, March 2002, Illust.

Rice, Robin, "Diane Burko," *ARTnews*, January 2002, Illust.

Sozanski, Edward, J., "Exhibits Spotlight PA Artists," *The Philadelphia Inquirer*, October 14, 2001.

West, Judy, "Fresh Perspectives," *ARTnews*, October 2001.

Rice, Robin, "Artistic Eruption, Diane Burko's Paintings of Volcanoes Burst into Locks Gallery," *Philadelphia City Paper*, September 27 - October 4, 2001, Illust.

Harrington, Michael, "Volcanoes as Inspiration of a Whole Different Color," *The Philadelphia Inquirer*, September 21, 2001, Illust.

Sozanski, Edward, J., "Realistic Yet Intimate Views of Nature's Forms, Forces," *The Philadelphia Inquirer*, September 21, 2001, Illust.

Biberman, Jane, "Lava Lover," *Philadelphia Metro*, September 19, 2001.

Harrington, Michael, "Volcanoes by Burko," *The Philadelphia Inquirer*, September 16, 2001.

Jordon, Sarah, "Stepping Out, Visual Arts," *Philadelphia Magazine*, September 2001.

Ledger, Martha, "The Fire Within, Molten Lava Erupting from the Earth's Core Creates New Land and Inspires New Art," *Inside*, Fall 2001, Illust.

Salisbury, Greg, "Insiders: We Lava Her Work," *Inside*, Fall 2000, Illust.



Glacial Dimensions- Art and the Global Ice Melt, Diane Burko, Kean University, 2015

Harrington, Michael, "Art," *The Philadelphia Inquirer*, Front page of Saturday Reviews Section, October 28, 2000, Illust.

Sozanski, Edward J., "New Directions and Some New Artists," *The Philadelphia Inquirer*, Friday, October 20, 2000, Illust.

Rice, Robin, "Winners: Five Leeway Grant Recipients and Two Pew Fellows Show Their Stuff at the Art Alliance," *Philadelphia City Paper*, October 12-19, 2000, Illust.

Wibking, Angela, "Natural Inclination: Painter Uses Her Brush to Connect with the Land," *Nashville Scene*, October 21, 1999, Illust.

McLean, Paul, "Public Art Exhibit: Nashville, What Kind of City Do You Want to Live in?" *In Review*, September 28, 1999, Illust.

Wibking, Angela, "Diane Burko at the Parthenon," *Nashville Scene*, September 1999.

Dormont, Linda, "Through the Heart of the City: Art Alliance Exhibition Celebrates River," *Art Matters*, May 1998, Illust.

Kasrel, Deni, "Integrating Public Art with City's Sightseers," *Philadelphia Business Journal*, May 1998.

"Mural Takes Shape at Hotel," *The Philadelphia Inquirer*, Thursday, March 5, 1998, Front page, Illust.

Rogala, Rachel, "Urban Pastoral," *Philadelphia Weekly*, March 10, 1998.

Seidel, Miriam, "Labor of Love: What Went into the Two-Year Process of Diane Burko's Monumental Murals, Unveiled Tomorrow at the Marriott Hotel?" *Philadelphia Weekly*, April 22, 1998, Illust.

Sher, Dena, "Wissahickon Painting Dedicated at Marriott," *Chestnut Hill Local*, April 29, 1998, Illust.

Guss, Carolyn, "Along and Along and Along the Wissahickon," *The Pennsylvania Gazette*, December 1996.

Hengst, William, "Wissahickon Mural at Marriott," *Chestnut Hill Local*, November 28, 1996.

Sozanski, Edward, "For Latest Project, She Focuses on Big Picture," *The Philadelphia Inquirer*, August 25, 1996.

Rice, Robin, The Right Stuff – “Four Artists Talk About the Challenge of Cezanne,” *City Paper*, June 1996.

Rickey, Carrie, “Cezanne at the Philadelphia Museum of Art,” *Philadelphia Inquirer Magazine*, May 1996.

Heller, Nancy G. “Diane Burko-Locks,” *Art News*, December 1994, Illust.

Hibbard, Chris, “Diane Burko at Locks Gallery,” *Eye Level*, Vol. I, #1, December 1994.

Beyer, Rita, “Magic of Nature in Burko Landscapes,” *Chestnut Hill Local*, September 29, 1994, Illust.

Sozanski, Edward J., “Locks Gallery,” *The Philadelphia Inquirer*, September 16, 1994.

Mangravite, Andrew, “Landscapes to Soothe the Human Heart,” *Welcomat*, September 14, 1994, Illust.

Halpern, Alan, “High and Outside,” *Seven Arts Magazine*, August 1994, Illust.

Rosenblum, Robert, “A Postscript: Some Neo Romantic Mutations,” *Art Journal-CAA*, Summer 1993, Illust.

Sozanski, Edward J., “Following Monet a Little too Closely” *The Philadelphia Inquirer*, December 4, 1992.

Wilson, Janet, “Diane Burko’s Lasting Impressions,” *The Washington Post*, July 6, 1991, Illust.

Stein, Judith, “Diane Burko at Marian Locks,” *Art in America*, May 1991, Illust.

Bumgardner, George, “Realist Oil Turns Nature Into Art,” *Ithaca Journal*, April 26, 1991.

Biberman, Jane, “Back to Giverny,” *The Pennsylvania Gazette*, March 1991, Illust.

Anderson, Alexandra, “Diane Burko, Marian Locks,” *Art News*, March 1991, Illust.

“On the Monet,” *Garden Design*, October 1991.

Fisher, Robert, I.C., “Giverny Revisited,” *American Artist*, November 1991, Illust.

Sozanski, Edward J., “Revisiting the French Landscapes of Monet,” *The Philadelphia Inquirer*, November 22, 1990, Illust.

Heller, Karen, “After 22 Years, Marian Locks Has Her Space,” *The Philadelphia Inquirer*, November 11, 1990.

Johnston, Roy, “Painting in Paradise,” *Skidmore Voices*, Spring/Summer 1990, Illust.

Wilson, Janet, “CAMEO – Diane Burko: Painting Light in Monet’s Shadow,” *Applause Magazine*, December 1989, Illust.

Bertugli, David, “Portrait of the Artists,” *Inside Magazine*, December 1989, Illust.

Matza, Michael, “Impression: Paradise,” *The Philadelphia Inquirer*, August 17, 1989, Illust.

Stein, Judith, “Painting: An Update,” *Women Artists News*, Spring/Summer 1989, Illust.

Homisak, Bill, “CMU Profiles Pennsylvania Painting,” *Tribune Review*, May 1, 1988.

Sozanski, Edward J., “Diane Burko at Marian Locks,” *The Philadelphia Inquirer*, April 7, 1988, Illust.

Gabriel, Claude, “Gallery Preview – Diane Burko,” *SCAN Magazine*, March 1988, Illust.

Altabe, Joan, “Artists’ Landscapes Excite the Senses,” *Sarasota Herald-Tribune*, February 21, 1988, Illust.

Weinstein, Ann, “Landscapes Really Show World Within the Artist,” *Roanoke Times and World-News*, October 18, 1987, Illust.

Boyle, Richard, “Allentown – Diane Burko,” *Art News*, May 1983, Illust.

DeSantis, Tullio, “The Water’s Fine in Her Drawings of State Rivers,” *Reading Eagle*, Reading, PA, May 8, 1983, Illust.

Hafamann, Albert, “The Waterways of Pennsylvania,” *Sunday Call-Chronicle*, Allentown, PA, March 6, 1983, Illust.

Washabaugh, Ann Perry, “Burko’s Waterway Art Recalls Landscape Genre,” *Globe Times*, Bethlehem, PA, February 27, 1983, Illust.

Donohoe, Victoria, “A Lofty View of Pennsylvania,” *The Philadelphia Inquirer*, Philadelphia, PA, February 4, 1983.

Cohen, Ronny H. “Drawing the Meticulous Realist Way,” *Drawing*, March – April 1982, Illust.

Donohoe, Victoria, “The Print Club’s Boost: It’s ‘Annual’,” *The Philadelphia Inquirer*, Philadelphia, PA, November 1, 1981.

Clurman, Irene, “Pencil Art,” *Rocky Mt. News*, Denver, Colorado, November 6, 1981.

Moss, Jacqueline, “Landscapes Today: An Important and First-Rate Exhibition at the Whitney,” *The Advocate*, Stamford, CT, November 13, 1981, Illust.

Fudge, Jane, “The Power of the Pencil,” *Westword*, Denver, CO, November 26, 1981, Illust.

Morton, Deborah Wallace, “Philadelphia Artist Gets Wish,” *Eire Daily Times*, Eire, PA, August 3, 1981.

Wilson, Janet, “Philadelphia Has to be Discovered,” *Art News*, March 1981, Illust.

Reith, Stephanie, “Women Join the Mainstream,” *Artweek*, February 1981, Illust.

Berlind, Bob, “Diane Burko at Stefanotti and PAFA,” *Art in America*, February 1981, Illust.

Gately-Shafto, Sally, “Diane Burko: Drawings,” *Arts*, December 1980, Illust.

Katz, Jonathan, “Review of Academy Show,” *Philadelphia Bulletin*, Philadelphia, PA, October 5, 1980.

Donohoe, Victoria, “Review of Academy Show,” *The Philadelphia Inquirer*, Philadelphia, PA, September 26, 1980.

Ledger, Marshall, “Her Art is Wide Open,” *Today Magazine*, *The Philadelphia Inquirer*, Philadelphia, PA, September 7, 1980, Illust.

Stoddard, Ann Bruce, “The Greatness Machine: Do We Still Need It?” *Women Artist News*, March 1980.



Watkins, Eileen, "Rutgers Dual Exhibits," *Star-Ledger*, New Jersey, February 1980, Illust.

Schiller, Marlene, "Footnotes on the Cover," *American Artist*, December 1979, Illust.

Bass, Ruth, "Diane Burko," *Art News*, September 1979.

Dolice, Joseph L., "Art in the City," *New York Downtown News*, August 1979, Illust.

"Art-Line News About People in the Arts," *Arts Arizona*, Summer 1979.

McFadden, Sara, "Report from Philadelphia," *Art in America*, May-June 1979, Illust.

Likos, Patt, "Land, Sea and Sky," *Women's Artist News*, May 1979.

Lubell, Ellen, "Art Picks," *Soho Weekly News*, March 1979, Illust.

Marter, Joan, "Diane Burko," *Arts Magazine*, March 1979, Illust.

Foreman, Nessa, "Drawing Today, What is it?" *The Bulletin*, Philadelphia, PA, September 1978.

Kaye, Ellen, "From Mountain Blue to Canyon Hues," *The Philadelphia Inquirer*, July 1978, Illust.

Bourdon, David, "There's a New Kid or Two in Town," *Village Voice*, June 1977.

Grissom, Gary, "Diane Burko at Marian Locks," *Art in America*, May-June 1977.

Nemser, Cindy, "Interview with Diane Burko," *Feminist Art Journal*, Spring 1977.

Frank, Peter, "Review of O.K. Harris Show," *Art News*, November 1976.

Malen, Lenore, "Diane Burko," *Arts Magazine*, December 1976, Illust.

Donohoe, Victoria, "Gallery Highlights," *Philadelphia Inquirer*, November 1976, Illust.

Nemser, Cindy, "Humanizing the Art World," *Feminist Art Journal*, Winter 1975.

Cochran, Diane, "Diane Burko: Going Places," *American Artist*, June 1975, Illust.

Donohoe, Victoria, "FMC Corporation Turning a Day at the Office into a Major Art Experience," *The Philadelphia Inquirer*, August 1975, Illust.

Kaplan, Jillya Ruth, "Her Art Classes as Pilot Project," *Evening Journal*, Wilmington, DE, January 1973.

Forman, Nessa, "Artists Find Stimulus in Camera's Clues," *The Bulletin*, Philadelphia, PA, November 1972, Illust.

"Aerial Landscapes Catches Attention of Allentown Art Museum Judges," *Morning Call*, Allentown, PA, June 1971, Illust.

CINDY LISICA
GALLERY

4411 Montrose Blvd. Houston, TX 77006 | 713-807-7760 | www.cindylisica.com

DIANE BURKO: TRACES OF CHANGE

March 18th – April 16th, 2016

From left to right:



Diane Burko, *Seabed Fossils, Upsala and Viedma Traverse I*, 2015
archival inkjet prints mounted on Dibond, 40 x 60 in. (each)
\$5000 each

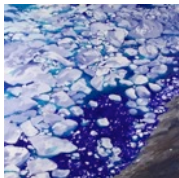


Diane Burko, *Rockwall III, Upsala and Viedma Traverse III*, 2015
archival inkjet prints mounted on Dibond, 40 x 60 in. (each)
\$5000 each



Diane Burko, *Illulissat Glacier II and Viedma Traverse II*, 2015 (not shown)
archival inkjet prints mounted on Dibond, 40 x 60 in. (each)
\$5000 each

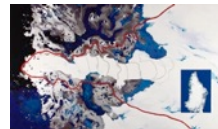
Jakobshavn-Illulissat Quartet



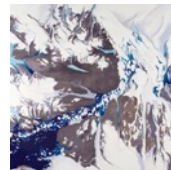
Diane Burko, *From the Edge*, 2015
oil and Flashe paint on canvas, 42 x 42 in.
\$20,000



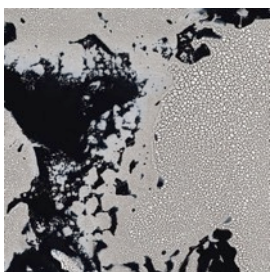
Diane Burko, *Landsat Jakobshavn B*, 2015,
oil and Flashe paint on canvas, 42 x 72 in.
\$25,000



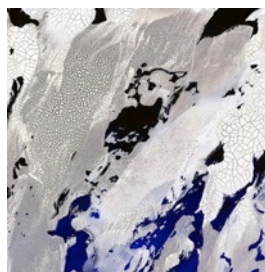
Diane Burko, *UNESCO National Heritage II*, 2015
oil and Flashe paint on canvas, 42 x 72 in.
\$25,000



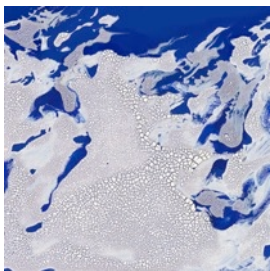
Diane Burko, *Modis 2009 III*, 2015
oil and Flashe paint on canvas, 42 x 42 in.
\$20,000



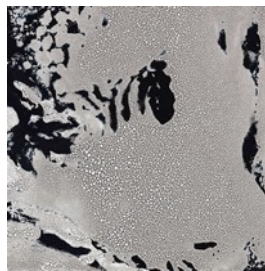
Diane Burko, *Elegy for Upsala Glacier*, 2015
archival inkjet print, 30 x 30 in.
\$3000



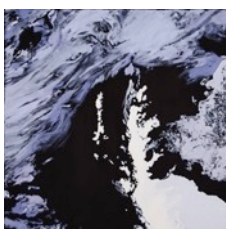
Diane Burko, *Elegy for Grinnell Glacier*, 2015
archival inkjet print, 30 x 30 in.
\$3000



Diane Burko, *Elegy for San Rafael Glacier*, 2015
archival inkjet print
\$3000



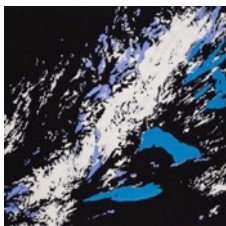
Diane Burko, *Elegy for Pine Island*, 2015
archival inkjet print, 30 x 30 in.
\$3000



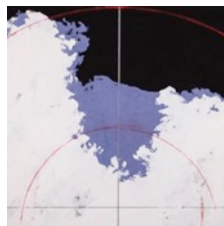
Diane Burko, *Antarctic Peninsula*, 2015
oil and Flashe paint on canvas 20 x 20 in
\$5000



Diane Burko, *Ilulissat Fjord*, 2015
oil and Flashe paint on canvas, 20 x 20 in.
\$5000



Diane Burko, *Patagonian Ice Field*, 2015
oil and Flashe paint on canvas 20 x 20 in.
\$5000



Diane Burko, *Scott Antarctic Expedition*, 2015
oil and Flashe paint on canvas, 20 x 20 in.
\$5000

