

CINDY LISICA

GALLERY

4411 Montrose Blvd. Suite F, Houston, TX 77006
Tel: 713-807-7760 | www.cindylisicagallery.com

PRESS RELEASE:

DIANE BURKO | ENDANGERED

Exhibition Dates: May 3rd – June 8th, 2019

Opening Reception: Friday, May 3rd, 6:00-8:30PM

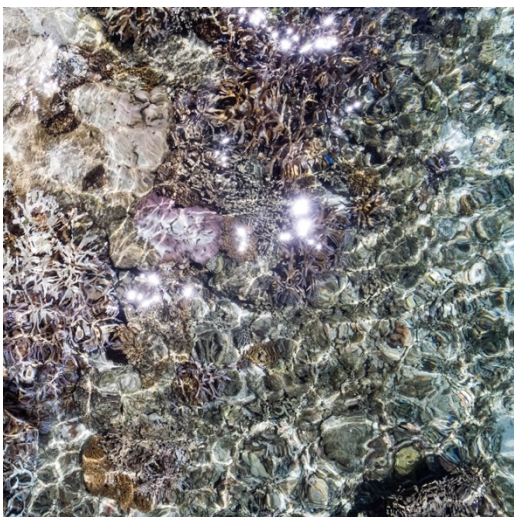
Artist's Talk: Saturday, May 4th, 2:00-3:00PM

Gallery Hours: Tuesday – Saturday 11:00AM-5:30PM



Diane Burko, *Great Barrier Reef*, 2018
acrylic on canvas, 60 x 84 inches

Cindy Lisica Gallery presents a solo exhibition of Diane Burko's newest work, which comes to Houston after two recent museum solo shows at the Walton Arts Center and the National Academy of Sciences in DC. Her latest ongoing series has taken her from glaciers to coral reefs, as she draws critical attention to inspiring monumental geological phenomena and environmental concerns through the stunning visual interpretations in her artwork. Her paintings, photography and mixed media reflect an incredibly impressive career and expeditions around the world, using new materials and technology. The *ENDANGERED* exhibition includes lenticular wall pieces that combine her painted images with photography and LED light to create an interactive presentation. Her skilled painting process moves from masterful brushwork to manipulating the viscosity of her paints, and she uses an air compressor to direct the composition and surface textures of the spectacular canvases. Her photography is equally as compelling with its dazzling compositions and rare glimpses of a changing planet. With her profound relationship with science, nature and aesthetics, Burko's artwork is fascinating and exceptionally moving.



Drone Over American Samoa, 2018
photographic print, 15 x 15 inches

Diane Burko (b. 1945, New York, NY, lives and works in Philadelphia, PA) is an internationally-recognized artist working at the intersection of art and science. She earned her MFA at the University of Pennsylvania in 1969, a Bachelor's in Painting and Art History at Skidmore College in 1966 and has been a professor at Princeton University, the Pennsylvania Academy of the Fine Arts, and the University of the Arts, among others. Her vast resume includes international museum shows and collections, such as the Art Institute of Chicago, National Academy of Sciences, Denver Art Museum, Philadelphia Museum of Art, Hood Museum of Art, Michener Art Museum, Tucson Museum of Art, Walton Arts Center, Woodmere Art Museum and Zimmerli Art Museum. Her artwork is also found in the collections of Bank of America, Goldman & Sachs, Mobil Oil Corporation, Philadelphia Convention Center, Prudential Insurance, and Wells Fargo Bank, in addition to numerous private collections. Her various honors include two National Endowment

for the Arts Fellowships, a residency through the Rockefeller Foundation, the Lila Acheson Wallace Foundation in Giverny, and a Lifetime Achievement Award by the Women's Caucus for Art.